



CCRL2 Polyclonal Antibody

Catalog No	YP-Ab-13169
Isotype	IgG
Reactivity	Human;Rat;Mouse;
Applications	WB;IF;ELISA
Gene Name	CCRL2
Protein Name	C-C chemokine receptor-like 2
Immunogen	The antiserum was produced against synthesized peptide derived from human CCRL2. AA range:141-190
Specificity	CCRL2 Polyclonal Antibody detects endogenous levels of CCRL2 protein.
Formulation	Liquid in PBS containing 50% glycerol, 0.5% BSA and 0.02% sodium azide.
Source	Polyclonal, Rabbit,IgG
Purification	The antibody was affinity-purified from rabbit antiserum by affinity-chromatography using epitope-specific immunogen.
Dilution	Western Blot: 1/500 - 1/2000. Immunofluorescence: 1/200 - 1/1000. ELISA: 1/20000. Not yet tested in other applications.
Concentration	1 mg/ml
Purity	≥90%
Storage Stability	-20°C/1 year
Synonyms	CCRL2; CCR11; CCR6; CKRX; CRAM; HCR; C-C chemokine receptor-like 2; Chemokine receptor CCR11; Chemokine receptor X; Putative MCP-1 chemokine receptor
Observed Band	40kD
Cell Pathway	Cell membrane ; Multi-pass membrane protein .
Tissue Specificity	Expressed abundantly in immunal tissues such as spleen, fetal liver, lymph node and bone marrow. Strong expression also in lung and heart. Expressed in almost all hematopoietic cells including monocytes, macrophages, PMNs, T-cells (both CD4+ and CD8+), monocyte-derived iDCs, NK cells, and CD34+ progenitor cells. B-cells expressed isoform 1 but not isoform 2. Up-regulated on synovial neutrophils of rheumatoid arthritis patients.
Function	function:Receptor for CCL2, CCL5, CCL7 and CCL8.;tissue specificity:Expressed abundantly in immunal tissues such as spleen, fetal liver, lymph node and bone marrow. Strong expression also in lung and heart.,
Background	This gene encodes a chemokine receptor like protein, which is predicted to be a seven transmembrane protein and most closely related to CCR1. Chemokines and their receptors mediated signal transduction are critical for the recruitment of effector immune cells to the site of inflammation. This gene is expressed at high levels in primary neutrophils and primary monocytes, and is further upregulated



on neutrophil activation and during monocyte to macrophage differentiation. The function of this gene is unknown. This gene is mapped to the region where the chemokine receptor gene cluster is located. [provided by RefSeq, Jul 2008],

matters needing attention

Avoid repeated freezing and thawing!

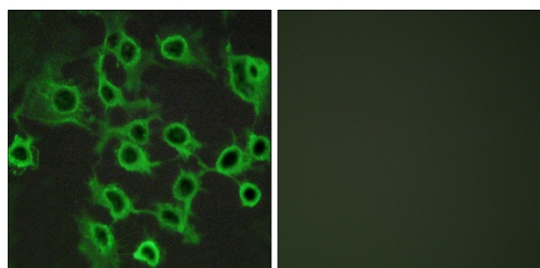
Usage suggestions

This product can be used in immunological reaction related experiments. For more information, please consult technical personnel.

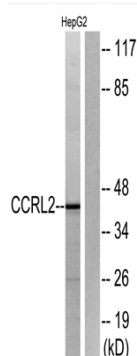
Products Images



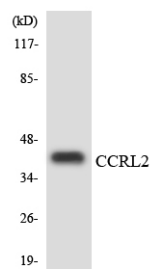
Western Blot analysis of various cells using CCRL2 Polyclonal Antibody



Immunofluorescence analysis of COS7 cells, using CCRL2 Antibody. The picture on the right is blocked with the synthesized peptide.



Western blot analysis of lysates from HepG2 cells, using CCRL2 Antibody. The lane on the right is blocked with the synthesized peptide.



Western blot analysis of the lysates from 293 cells using CCRL2 antibody.